

# Comparative Study



*Femme aux  
Bras Croisés*  
By: Pablo  
Picasso

Introduction: I will be comparing two artists' works from different time periods, and parts of the world, who both use color to evoke emotion through their artwork. Pablo Picasso, specifically during his blue period, and Carol Rode, a local artist with pieces on display in galleries near me. They both use blue hues to convey sadness and despair in their art that may not otherwise be accomplished. The pieces I will be focusing on by the artists are *Femme aux Bras Croisés* by Pablo Picasso, *i can't remember if half of what i say is true* by Carol Rode, *I Will Never Think About You Without Being Nauseated* by Carol Rode, as well as *The Old Guitarist* by Pablo Picasso.

"Femme Aux Bras Croisés, 1902 by Picasso." *Femme Aux Bras Croises, 1902* by Pablo Picasso. [www.Pablocicasso.org](http://www.Pablocicasso.org), 2009. Web. 29 Oct. 2015.

*i can't remember if half  
of what i say is true*  
By: Carol Rode

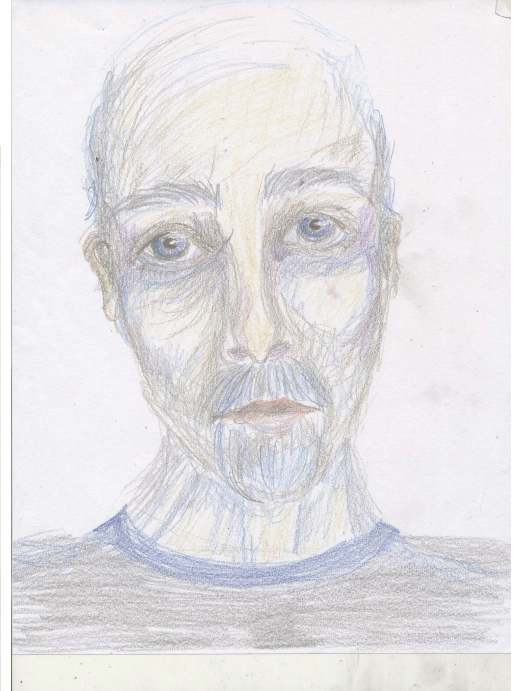
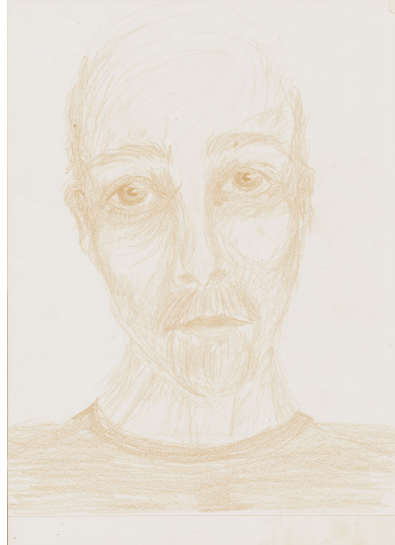
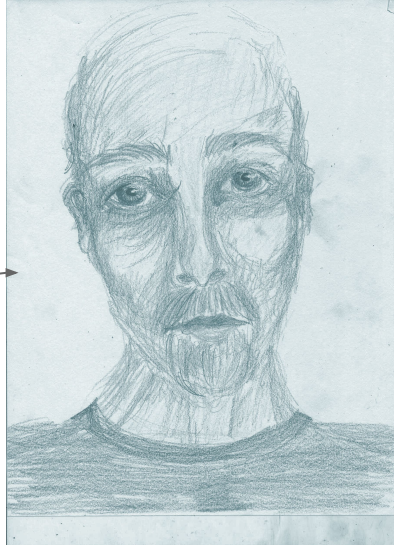


Source: Rode, Carol. *Smashing Pastels*. Carol Rode, n.d. Web. 25 Aug. 2015.

# The Use of Color to Evoke Emotion Through Art

- Color is used to convey emotion in illustration or fine artwork.
- Color is also used literally to create a mood, or figuratively to evoke emotion more subtly.
- Example: **Yellow** is used to express joy and hope, while **blues** are used to represent sadness and despair.
- Just as writers and poets use symbolism and metaphors to communicate their works underlying meaning, artists may use color and hues to communicate theirs.

This is a drawing I did, in different colors, to show how color can change the emotion evoked by a work of art.



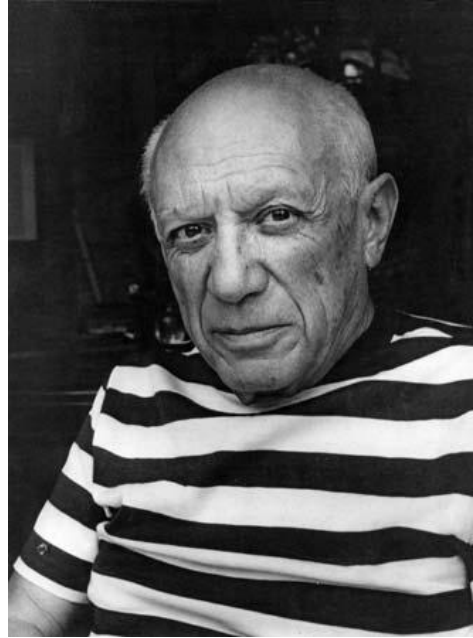
# Pablo Picasso and His Blue Period

## Basic Information on the Artist:

Pablo Picasso was a Spanish painter, born in 1881, who became one of the most revered artists from the 20th century. Picasso was one of the co-creators of cubism and helped to develop modern art. Pablo Picasso was a painter, printmaker, sculptor, ceramicist and stage designer, although many of his most famous pieces are paintings.

## Picasso's Blue Period:

A period of time from about 1900-1904 when Picasso used mainly blues in his art work. These pieces have become some of his most famous works. They were painted in Paris, France, but were inspired by poverty, suffering, and his friend's suicide. Picasso himself later recalled, "I started painting in blue when I learned of Casagema's death". The subjects of these paintings were mainly beggars, street urchins, the old, frail, and the blind.



During his blue period, Picasso used colors like these to convey the sadness he was feeling.



## Reactions to *The Old Guitarist* by Pablo Picasso

When I saw the painting *The Old Guitarist* I was at the Art Institute of Chicago, in Illinois. The painting is more moving to see in person than in a book or online. The colors especially evoke sadness. It is truly amazing how an entire painting's meaning and the way viewers feel about it can be changed by the colors the artist used. Looking at other paintings of Picasso's, from happier times in his life, the color change is dramatic. If this painting were to be done in the rosey pinks and reds that Picasso uses in other paintings it may not convey the same sadness that the painting does as it is.

The painting's focus is the man sitting, playing the guitar. Although his hands are placed on the guitar as if they are resting there and not actually playing. The man's body is thin and the blue hue of his skin suggests that he is sad, or sick. This is meaningful because of the time period and influences in Picasso's work at the time. Influences like the slums of Paris, depicted in the following pictures:



"About This Artwork." *The Old Guitarist*. Art Institute of Chicago, 2013. Web. 11 Sept. 2015. <<http://www.artic.edu/aic/collections/artwork/2806>

Pictures from: <http://www.oldpicz.com/picz/2015/03/The-slums-of-Paris-1900..jpg>

# Cultural Influence for Picasso's *The Old Guitarist*

Picasso did this painting at age twenty-two, in Barcelona, during 1903, shortly after his friend Casagemas died, when his blue period emerged. At the time Picasso was not having success as an artist and had been very poor throughout 1902 and felt sympathy for others who were struggling. This caused him to frequently paint people in poverty, as well as the blind, old and ill. Spanish culture at the time influenced him to paint the prostitutes, drunks, and the homeless as he ventured through his home country of Spain. This painting in particular is one of his most haunting. Picasso was actually quoted saying "Painting is just another way of keeping a diary", showing that Picasso's cultural influence for his paintings were what he saw, or what he was feeling at the time.

"About This Artwork." *The Old Guitarist*. Art Institute of Chicago, 2013. Web. 11 Sept. 2015. <<http://www.artic.edu/aic/collections/artwork/28067>>.



## Reactions to *I Will Never Think About You Without Being Nauseated* by Carol Rode

When I first saw this piece I immediately thought of the painting *The Old Guitarist* by Pablo Picasso because of the person's blueish skin, and thin, long, figure. It is easy to draw similarities between the two because of the color scheme and unrealistic proportions. The elongated body of this figure is what draws me the most to this piece, I really appreciate the surrealist qualities of Carol Rhode's work that are emulated in *I Will Never Think About You Without Being Nauseated*.

This piece's monochromatic qualities help to show sadness in the drawing. The title of this piece was another thing that drew me to it. Unlike some artists, whose paintings are a basic description of what the piece features, such as Picasso's *The Old Guitarist*, this title informs you of the subject. Unlike this piece by Carol Rode which is titled to develop emotion, and to reflect the feelings given off in the picture. The title in this case, helps add to the meaning of the work itself, and how one views the piece.

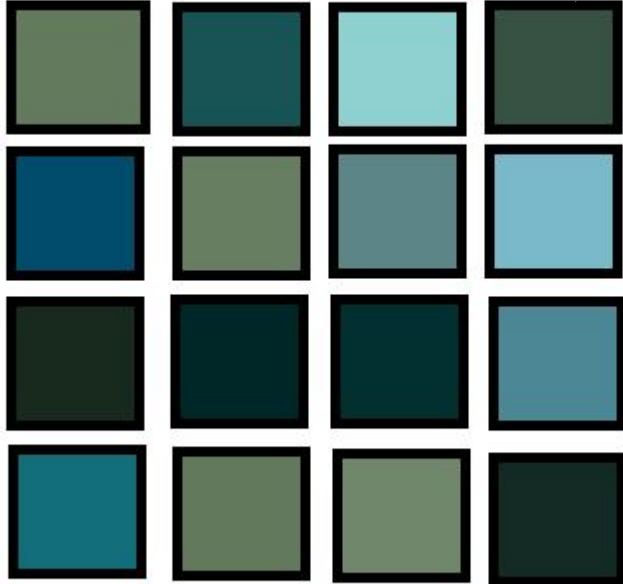
Source: Rode, Carol. *Smashing Pastels*. Carol Rode, n.d. Web. 25 Aug. 2015.



# Colors in

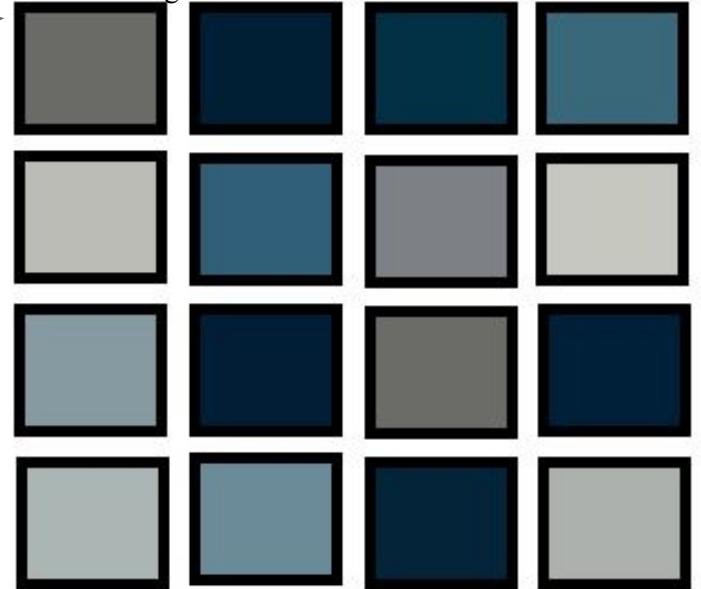
## *The Old Guitarist* by Pablo Picasso

"About This Artwork." *The Old Guitarist*. Art Institute of Chicago, 2013. Web. 11 Sept. 2015. <<http://www.artic.edu/aic/collections/artwork/2806>>



## *I Will Never Think About You Without Being Nauseated* by Carol Rode

Source: Rode, Carol. *Smashing Pastels*. Carol Rode, n.d. Web. 25 Aug. 2015.



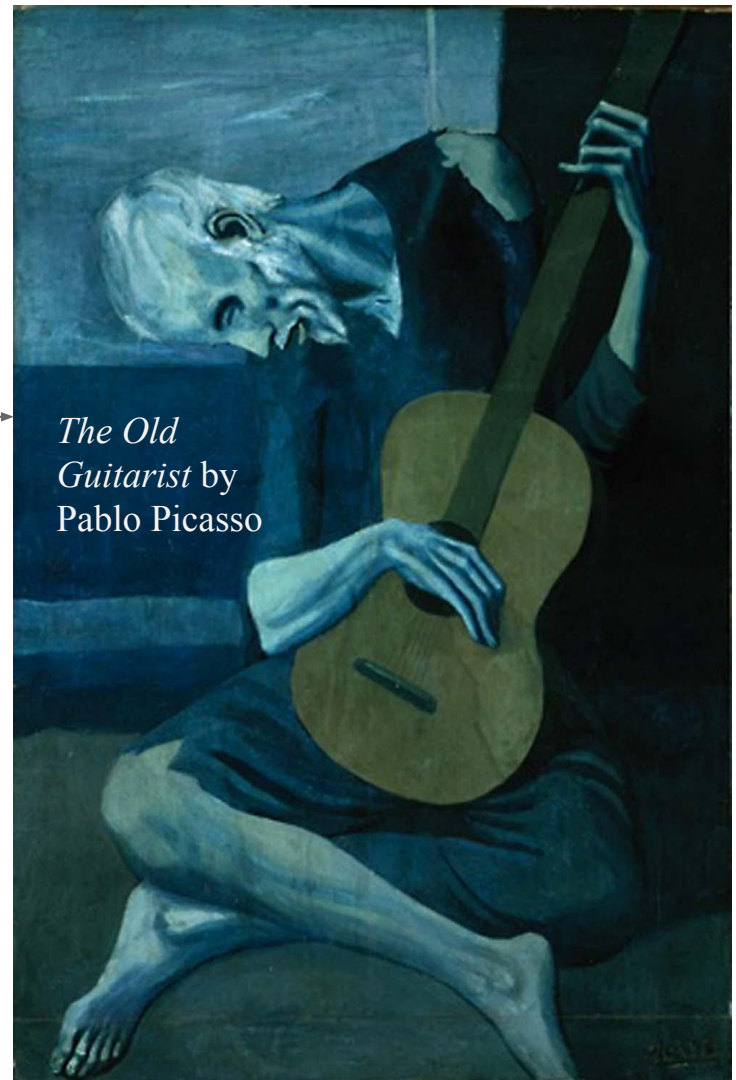
*I Will Never  
Think About You  
Without Being  
Nauseated By*  
Carol Rode



Source: Rode, Carol.  
*Smashing Pastels*. Carol  
Rode, n.d. Web. 25 Aug.  
2015.

"About This Artwork." *The Old  
Guitarist*. Art Institute of Chicago,  
2013. Web. 11 Sept. 2015. <[http://www.artic.  
edu/aic/collections/artwork/2806](http://www.artic.edu/aic/collections/artwork/2806)

There are  
similarities in  
the use of color  
and the choice  
of color. They share  
similar  
styles and  
technique.



*The Old  
Guitarist* by  
Pablo Picasso



# Carol Rode vs. Pablo Picasso

\*A movement introduced by a group of writers and artists led by French poet André Breton (1896–1966) in Paris in 1924. Surrealists embraced the act of spontaneous creation.

Surrealist work explores the world of dreams, fantasies, and the subconscious in their art. \*\*Monochromatic- Having one color or hue, monochromatic works of art are usually limited to a pallet of light and dark shades of one color.

\*\*\*Pallet: A range of colors used by a particular artist or in a particular artwork.

Carol Rode

- Uses pastels
- Mixed media artist
- Local artist
- Influenced by her father



Pablo Picasso

- Painter
  - sculpter
  - Cubism
  - Symbolism
  - Spanish artist
  - Influenced by Edvard Munch and Henri de Toulouse-Lautrec
- Blue hues
  - Colors not normally used as flesh tones are used as flesh tones
  - surrealism\*
  - Collage
  - Monochromatic\*\* pallet\*\*\*



"About This Artwork." *The Old Guitarist*. Art Institute of Chicago, 2013. Web. 11 Sept. 2015. <<http://www.artic.edu/aic/collections/artwork/2806>>

# Local Artist

- Carol Rode
- Showing at the Muse Guesthouse
- Works in pastels
- Surreal, abstract work
- Sometimes includes mixed media in pastel drawings

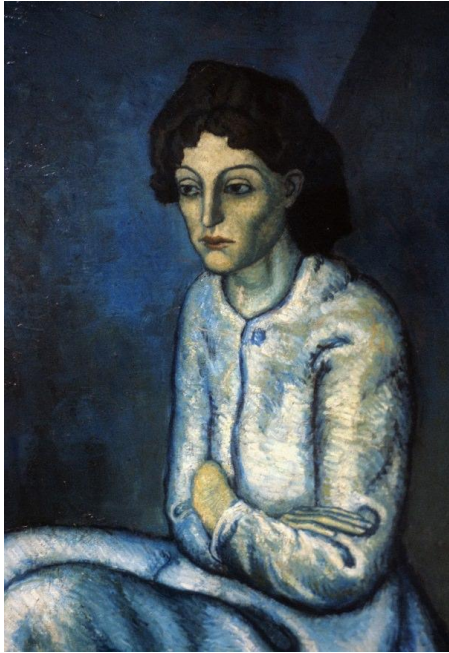
*I Will Never Think About  
You Without Being  
Nauseated* by Carol Rode

Source: Rode, Carol.  
*Smashing Pastels*. Carol  
Rode, n.d. Web. 25 Aug.  
2015.



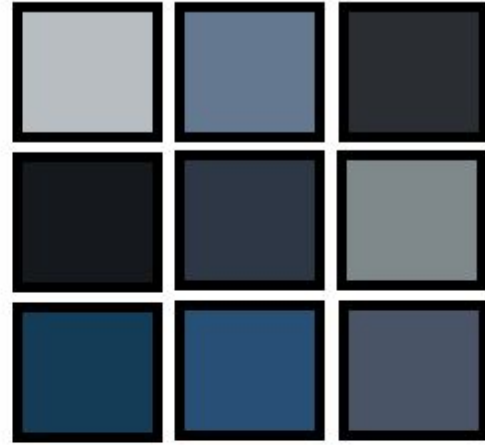
# Compare and Analyze the Colors in *Femme aux Bras Croisés* by Pablo Picasso, and *i can't remember if half of what i say is true*, by Carol Rode

*Femme aux Bras Croisés* by Pablo Picasso



Compare: Monochromatic blue palette, many grey tones.

Analyze: A lot of the colors are similar to each other, although the skin tones in Carol Rode's piece are white, light blue, and pale greys, while the skin tones in Picasso's piece are somewhat warm, tan colors that are surrounded by blues that overpower them.



"Femme Aux Bras Croisés, 1902 by Picasso." *Femme Aux Bras Croises, 1902 by Pablo Picasso*. [www.Pablopicasso.org](http://www.Pablopicasso.org), 2009. Web. 29 Oct. 2015.

Rode, Carol. *Smashing Pastels*. Carol Rode, n.d. Web. 25 Aug. 2015.

*i can't remember if half of what i say is true*, by Carol Rode

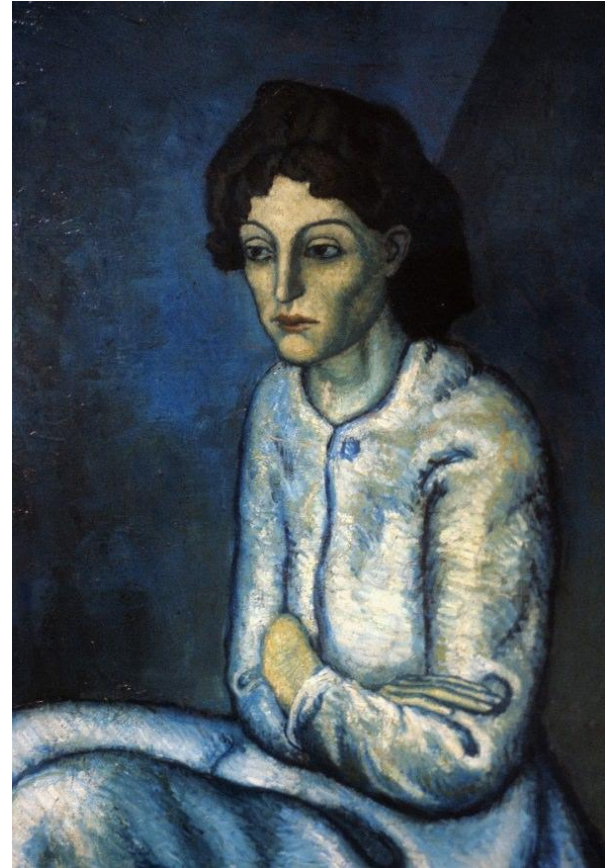


## Reactions to *Femme aux Bras Croisés* by Pablo Picasso

The painting *Femme aux Bras Croisés* (or in English *Woman with Folded Arms*) by Pablo Picasso is privately owned as of 2000, so I was not able to see this painting in person. Although, my mother did during the time it was at the Art Institute of Chicago and claims it was one of her favorite paintings in the museum.

I really wish that I was able to see this painting in person because it is almost impossible to completely appreciate a painting through a computer screen, or in the pages of a book. Despite this it is still one of my favorite paintings by Picasso and a great example of the work from his blue period. Picasso uses the composition of this anonymous woman to evoke a melancholy feeling, his decision to have his subject's arms crossed makes her seem reserved, and inwardly focused. She is staring blankly at something the viewer is not able to see, and combined with the blue colors it gives me a sense of longing for something.

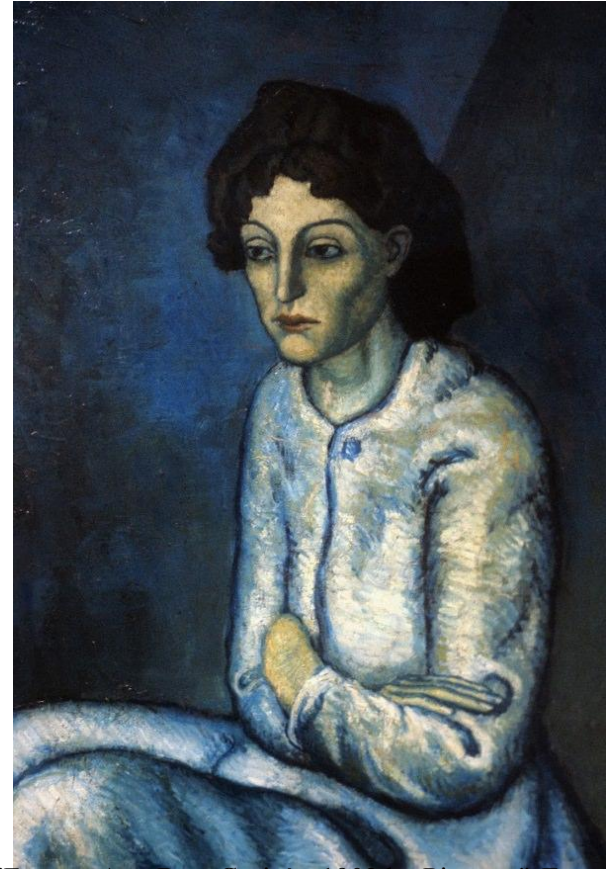
"Femme Aux Bras Croisés, 1902 by Picasso."  
*Femme Aux Bras Croises, 1902 by Pablo Picasso.* [www.Pablocicasso.org](http://www.Pablocicasso.org), 2009. Web. 29 Oct. 2015.



## Cultural Influences for *Femme aux Bras Croisés* by Pablo Picasso

This painting was done in 1902, during Picasso's blue period, while Picasso was in Paris. Although the identity of the woman in this piece is unknown, she is thought to be an inmate of the Saint-Lazare Hospital-Prison in Paris. The woman is sitting with her arms crossed, staring at nothingness. It reflects the dark, sad time in Picasso's life that prompted his blue period. Picasso used color to depict emotion throughout his career, having a rose period as well.

This painting was done with oil on lithographic material, and is one of Picasso's most expensive paintings to this day. The painting was originally bought by Gertrude Stein from Picasso shortly after its creation. But, later on the painting was taken over by the McCormick family who organized an auction in New York City, where the painting sold for \$55,000,000 on November 8, 2000. Making it one of the most expensive paintings ever sold at auction. This information is important because its price is a reflection of its beauty and complex ideas that caused the painting to have many potential buyers.



"Femme Aux Bras Croisés, 1902 by Picasso." *Femme Aux Bras Croises, 1902 by Pablo Picasso.* Www. Pablocicasso.org, 2009. Web. 29 Oct. 2015.

# Influences for Carol Rode's Work

*i can't remember if half of what  
i say is true*, by Carol Rode

Rode, Carol. *Smashing Pastels*.  
Carol Rode, n.d. Web. 25 Aug.  
2015.



A common element of Carol Rode's pieces, is her creative, titles that explain the theme of the piece. In this piece it is evident that it's inspiration was an emotion felt by Rode because she cannot remember if half of what she says is true, This is a theme that many people can connect to, emulating human dishonesty, and the confusion associated with living a lie. I personally connect to this theme on some level because being honest all the time is almost impossible to do without conflict.

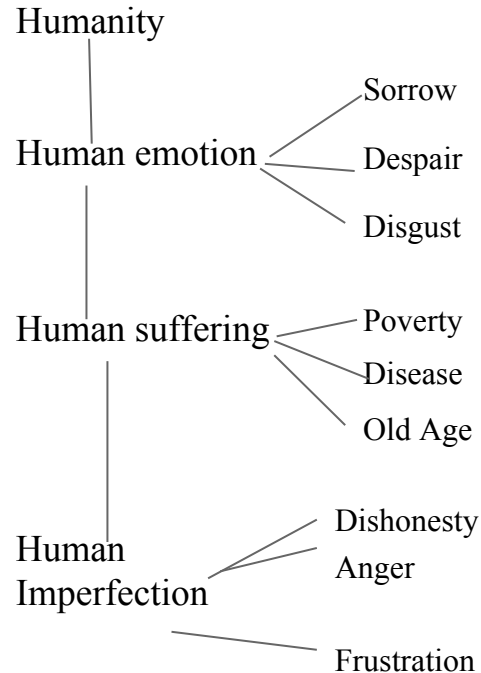
*I Will Never Think About  
You Without Being  
Nauseated* by Carol Rode

Source: Rode, Carol. *Smashing Pastels*.  
Carol Rode, n.d. Web. 25 Aug. 2015.



This piece can be traced back to a feeling of disgust for another human being. Like many of Rode's pieces, this one has dark thematic undertones that strengthen the pieces emotional grip on a viewer. The pieces title *I Will Nerver Think About You Without Being Nauseated* gives the piece a background story, and yet is only one sentance. Carol Rodes ability to chose titles that carry significant meaning allows the viewer to go deeper into the pieces subject, and allow them to make sense of the scene, without over spesificating what is going on. This leaves the viewer with the ability to relate to the piece, and the feeling of disgust that the piece produces.

# Thematic Qualities Used by Carol Rode and Pablo Picasso



What all of these themes have in common is that they are all what makes us human. They are all themes based in tragedy, but they are all tragedies that make us human.

**Conclusion:** Carol Rode and Pablo Picasso similarly express the themes of human tragedy through their use of monochromatic color palettes. The colors used in their pieces evoke the mood and emotion behind the work. With these artists use of those techniques in the pieces *i can't remember if half of what i say is true* and *I Can't Look at You Without Being Nauseated* by Carol Rode, as well as the pieces by Pablo Picasso titled *Femme aux Bras Croisés* and *The Old Guitarist* it allows the viewer to understand the feelings being conveyed.

## Picasso and Rode Inspired Art



*The Old Man*

By: Lara Geib

Media: Colored Pencil  
and Acrylic on Paper

Critique: In this piece, I was able to successfully demonstrate a monochromatic pallet similar to the one used by Picasso during his blue period, as well as the pallet used in pieces by Carol Rode. Though my piece is done in slightly darker hues, the similarities between it, and the piece's I tried to emulate are strong. I captured the feelings' of sorrow and despair by using colors mirror them.

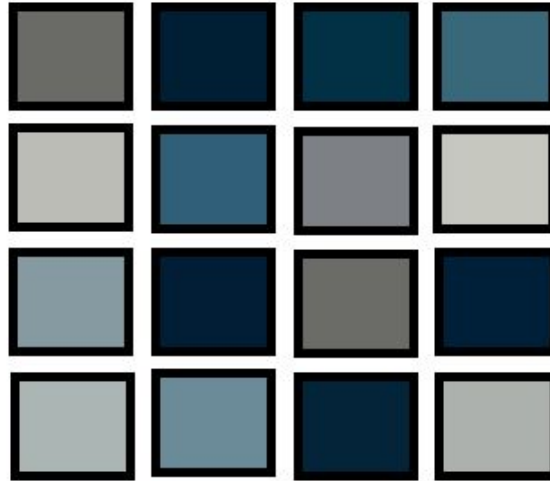


Comparing the Color Schemes of *The Old Man*, and *I Will Never Think About You Without Being Nauseated*



The two pieces consist of similar mono-chromatic color schemes. *The Old Man* has slightly darker tones, but the basic hues are extremely similar.

*The Old Man*  
By: Lara Geib



*I Will Never Think About You Without Being Nauseated* by  
Carol Rode

# Compare and Contrast of *The Old Man*, and *The Old Guitarist*



## Similarities (Compare):

- Blue based monochromatic pallet
- Elderly subject
- Impressionist style
- Similar theme of depression and misery
- Titles that are a basic description of the work's subject

## Differences (Contrast):

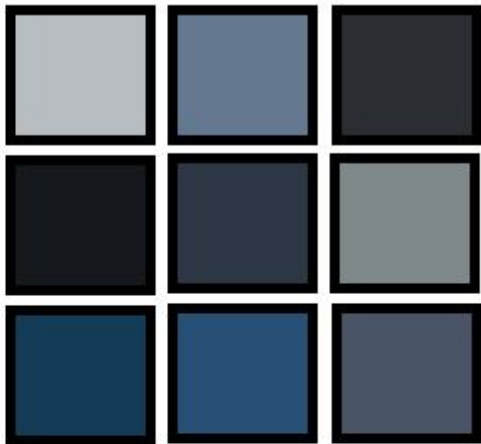
- Different levels of detail
- *The Old Man* is slightly darker, and its hues are slightly more purple.
- *The Old Guitarist* uses more green tones than *The Old Man*
- Different media used
  - *The Old Man*: Colored pencil and acrylic on paper
  - *The Old Guitarist*: Oil paint on canvas



*The Old Man vs. i can't remember if half of what i say is true*

The color scheme in these two pieces is very similar, although *The Old Man* has slightly warmer tones, creating almost purple hues, while *i can't remember if half of what i say is true* leans towards colder blues.

*i can't remember if half of what i say is true*, by Carol Rode

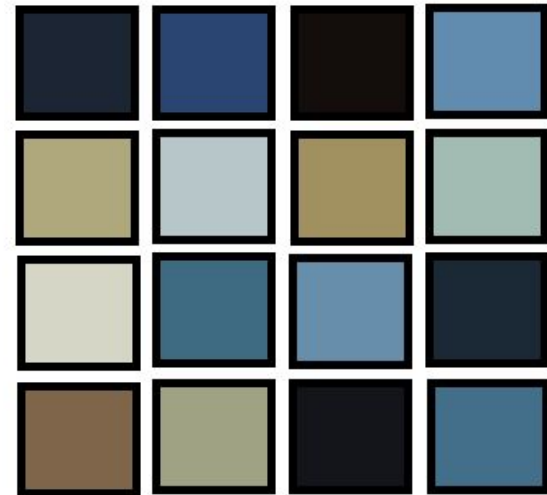


*The Old Man*, by Lara Geib (me).

*The Old Man vs. Femme Aux Bras Croisés*

There are similarities between these two pieces color schemes, especially in the darker blues, although my piece did not have as many beige tones.

*Femme Aux Bras Croisés*, by Pablo Picasso



# Bibliography

<http://refinersfire.us/a-thing-or-two-about-a-tune-or-two-beating-the-blues/>

smashingpastels.com

slide 2 <http://www.biography.com/people/pablo-picasso-9440021>

slide 3 <http://www.pablocicasso.org/blue-period.jsp>

<http://www.artic.edu/aic/collections/artwork/28067>

slide 4 pic 3 <http://www.oldpicz.com/picz/2015/03/The-slums-of-Paris-1900..jpg>

Slide 4 pic 2 <https://www.pinterest.com/pin/377669118723930821/>